

## LIGHTING UNIT



- Lamp: LED, 120° angle, 6500 K
- Luminosity: 400 lm
- Voltage/Frequency: 24-265 V DC/AC ~ 50/60 Hz
- Power consumption: 5 Watt
- Control of light: Built-in motion sensor, switch off time—5 min.
- Mounting: Magnets
- Operating temperature range: from -30°C up to +70°C
- Dimension: 357,4 × 32 × 35,5 mm (H × W × D)
- Weight: 140 g
- Certifications: CE, UL

Code	Description	Package
DP-OJ-06	Lighting unit 400 lm with motion sensor, 24–265 V DC/AC ~ 50/60 Hz, magnetic fixing	1 set

## CABLE PROTECTION IN OPENINGS



DP-KP-KAR



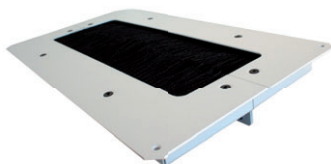
DP-KP-RB4



DP-KP-HCE2



DP-KP-KAR9



DP-KP-KAR-A



DP-KP-KAR7



DP-KP-KAR4



DP-KP-KAR4-D

- Protective strips and brush panels help protect cable entries, limiting dust penetration
- Installed in cable entry openings (300 × 100 mm or 300 × 50 mm)
- Mounting holes (for wall installation) on rear

Code	Description	Available colors		Package
		RAL 7035	RAL 9005	
DP-KP-LEM	Protective edging of cable entries (length 790 mm)	–	✓	1 pc
DP-KP-HCE2	Hermetic cable entry for rack with IP54 (opening 300×100 mm)	✓	✓	1 pc
DP-KP-KAR	Cable entry covered with brush for iSEVEN and Premium series (opening 300×100 mm)	✓	✓	1 pc
DP-KP-KAR3	Cable entry 150×56 mm covered with brush for RUN, RUD, REN series	✓	–	1 pc
DP-KP-KAR4	Cable entry, two layers of brushes (opening 300×100 mm)	✓	✓	1 pc
DP-KP-KAR4-D	Cable entry, two layers of brushes, divided version (opening 300×100 mm)	✓	✓	1 pc
DP-KP-KAR5	Cable entry 300×50 mm, covered with brush	✓	✓	1 pc
DP-KP-KAR6	Dust-proof brush for cable entry 500×110 mm (for RI7/RM7), two pieces of brushes and two pieces of rubber for edges of cable entry	–	✓	1 pc
DP-KP-KAR7	Slidable cover for cable entry 300×100 mm	✓	✓	1 pc
DP-KP-KAR9	Cable entry with radius cable protection, for 300×100 mm opening	✓	✓	1 pc
DP-KP-RB4	Cable entry diameter 100 mm (4"), covered with brush	–	✓	1 pc
DP-KP-RP4	Cable entry diameter 100 mm (4"), plastic	–	✓	1 pc
DP-KP-KAR-A	Cable entry for raised floor tiles, two layers of brushes (opening 410×215 mm)	✓	✓	1 pc